

How Can I Help?

MAKE A FOOD DONATION

Non-perishable kosher food may be dropped off at Rockland Jewish Family Service. All food must be certified Kosher. Please call ahead to schedule a drop-off. Drop off boxes are also located at our participating synagogues.



SPONSOR A FOOD DRIVE

Sponsorship & Naming opportunities are available.

MAKE A MONETARY DONATION

The Rhoda Bloom Kosher Food Pantry is operated by RJFS, a tax exempt organization with 501(c)3 status. Donations are tax deductible.

VOLUNTEER

The Pantry is staffed only by volunteers and we can always use more help. Last year over 1200 volunteer hours were logged to help run the Pantry.

Participating Synagogues

- BAIS TORAH
- BETH AM TEMPLE
- CONGREGATION SHAAREY ISRAEL
- CONGREGATION SHIR SHALOM
- CONGREGATION SONS OF ISRAEL NYACK
- KEHILAT NEW HEMPSTEAD
- NEW CITY JEWISH CENTER
- ORANGETOWN JEWISH CENTER
- THE REFORM TEMPLE OF ROCKLAND
- TEMPLE BETH SHOLOM

We are here for you!

(845)354-2121 ext.140

www.rjfs.org www.facebook.com/RJFS.org

Once a month volunteers from area orthodox, conservative and reform synagogues in Rockland County come together to distribute food to our recipients.

VOLUNTEERING AT THE PANTRY

Volunteers are asked to help from 9am to Noon on the day of distribution, one Sunday each month. All levels of physical ability are welcome.

OTHER VOLUNTEER OPPORTUNITIES

On the Wednesday before distribution, volunteers are needed to pick up food from an area New York Food Bank drop-off point and deliver it to our Pantry. Please contact us if you would like to participate in this part of the program. Moving of boxes and maneuvering carts and handtrucks is required for this assignment.

On the Friday before distribution, boxes need to be assembled and prepared for the Sunday volunteers to fill with food. If you are available Friday afternoons, please let us know. This is a less strenuous assignment.

Thank You!

Rockland Jewish Family Service
450 West Nyack Road, Suite 2
West Nyack, NY 10994
Phone: 845.354.2121, ext. 140
Fax: 845.354.2928
www.rjfs.org
www.facebook.com/RJFS.org
Email: reception@rjfs.org



Rhoda Bloom Kosher Food Pantry

Serving individuals and families in Rockland County through the help of our generous sponsors, donors & volunteers.



(845)354-2121 ext.140

www.rjfs.org www.facebook.com/RJFS.org

Rhoda Bloom Kosher Food Pantry

Serving individuals and families in Rockland County through the help of our generous sponsors, donors & volunteers.

The History

In 1995 local resident Marianne Shain responded to the need for a kosher food pantry in Rockland County. She called upon the various synagogues in the county and invited them to participate in this worthwhile project.

Under the auspices of Rockland Jewish Family Service, the kosher food pantry opened its doors in 1996. We started out serving only five families each month. Today we serve over 200 families each month, with additional emergency food available throughout the year.

In 2000 Rhoda Bloom became coordinator of the Jewish Community Food Pantry. In December 2003 the food pantry was renamed for Rhoda in honor of the countless hours she dedicated to this program until her untimely death in February 2005. The Rhoda Bloom Kosher Food Pantry will forever be a tribute to her memory.



Who Can Use the Food Pantry?

The Rhoda Bloom Kosher Food Pantry is available to any Rockland County resident experiencing hardship regardless of race, religion, ethnic origin, gender, sexual orientation or disability.

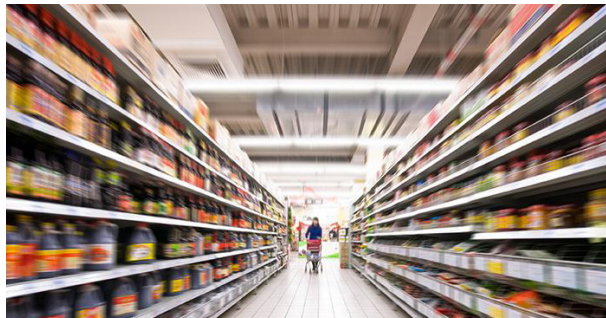
Do You Provide Emergency Food?

Anyone is entitled to emergency food at any time for any reason. This is a one time service only. Regular recipients are required to fill out an application to qualify for food on a monthly basis.

What Is the Application Process?

In order to qualify, individuals must fill out a food pantry application and submit it along with proof of income. Some individuals may automatically qualify if they are receiving public assistance benefits. Supporting documents will be required.

A Rockland Jewish Family Service staff member screens all applicants, reviews the applications and makes a determination based on income eligibility. The applicant is then notified of the decision usually within one week. Approvals are good for a maximum of one calendar year and must be renewed each January.



If you or anyone you know is experiencing economic hardship and is in need of food, please contact RJFS at (845)354-2121 x140.

What is Supplied?

The pantry supplies families with Kosher certified food items based on federal government recommendation. Our food offerings are primarily shelf-stable items that will offer nutritional value with a minimum of storage requirements. We are also able to offer fresh produce, baked goods and frozen items on occasion.

During the holiday season, we provide turkeys, chickens and other holiday items to help make the holidays special.

How Does Distribution Work?

Regular food distribution is conducted once each month on a Sunday morning. The schedule is published at the beginning of the year and is available at our office or on our website at <https://www.rjfs.org/food>.

The Rhoda Bloom Kosher Food Pantry is strictly confidential, therefore recipients are identified by number rather than by name.

All recipients are assigned a member card with a number which must be presented at the time of pick up. Anyone can pick up for a recipient as long as they have their member card available.

Volunteers are always available to carry the food to the recipient's vehicle.

When are the Food Pickups?

Dates are listed on the back of each member card.
Pickup **times** are from 10:30 am to 12:00 noon.
Pick up **location** is at
Rockland Jewish Family Service
450 West Nyack Road, West Nyack, NY 10994

Check WWW.RJFS.ORG/FOOD for dates & info